

TRELEAN FARMHOUSE

16 CALAIS ROAD

ST. ERTH, HAYLE,
TR27 6EG



Philip Martin

ESTATE AGENTS, CHARTERED SURVEYORS, VALUERS & AUCTIONEERS



TRELEAN FARMHOUSE

16 CALAIS ROAD

ST. EARTH, HAYLE,
TR27 6EG

GRADE II LISTED FARMHOUSE SET WITHIN
EXTENSIVE GARDENS

A substantial period property set within three quarters of
an acre of mature gardens.

In all the current accommodation comprises; Double
fronted sitting room, kitchen/diner, large utility, ground
floor shower room, four bedrooms, family bathroom and
walk in wardrobe.

A superb family home immersed in rural surroundings.

Council Tax - C. EPC TBC. Tenure - Freehold.

A real rarity to the market which must not be missed.

GUIDE PRICE £695,000

Philip Martin

PHILIP MARTIN

9 Cathedral Lane, Truro, Cornwall, TR1 2QS

Truro: 01872 242244 **St Mawes:** 01326 270008

E: sales@philip-martin.co.uk

www.philip-martin.co.uk



The particulars are issued on the understanding that all negotiations are conducted through Philip Martin who for themselves or for the Vendor whose agents they are, give notice that:

(a) Whilst every care has been taken in preparation of these particulars, their accuracy is not guaranteed, and they do not constitute any part of an offer or contract. Any intended purchaser must satisfy himself by inspection or otherwise as to the correctness of each of the statements contained in these particulars.

(b) They do not accept liability for any inaccuracy in these particulars nor for any travelling expenses incurred by the applicants in viewing properties that may have been let, sold or withdrawn.

Sales - Referral fee disclosure - We may recommend conveyancing services to you through Muve. These services are optional, however, should you use their services, Philip Martin will receive a payment which is typically £200 plus vat.

GENERAL COMMENTS & LOCATION

Believed to have been built around 1830, Trelean Farmhouse is a step back in time to a bygone Georgian era. The house lies within a small hamlet comprising the farmhouse and three traditional stone barn conversions. The access road is shared between these four dwellings and has recently been resurfaced with tarmac. It meanders through farmland providing a very pleasant approach and in addition, Trelean's eastern boundary backs onto farmland offering an ever changing outlook. The location combines the best parts of rural living with the security of living near others.

Trelean Farmhouse is located between St Erth and Leedstown. The property lies on the outskirts between both small villages which have good primary schools, post office/shop and pub. Trelean is near several major towns, centrally positioned between the north and south coast within easy commuting distance of the main shopping and employment centres including the ancient market town of Helston and the popular tourist resort and harbour town of Hayle with its out of town retail park with Marks & Spencer, Next and Boots. The beautiful harbour town of St Ives as well as Camborne and Redruth are also close by.



THE PROPERTY

The house is particularly attractive from its front elevation with a hipped grouted scantle roof, brick chimneys, cast iron gutters and twelve pane sash windows. Well proportioned rooms are to be expected with a property of this type and Trelean

does not disappoint. A large double fronted sitting room offers two large sash windows and sash door providing an abundance of light into a space spanning 25 feet in width. The kitchen/diner mixes traditional architecture with modern interior design.; open plan with a modern fitted kitchen

Philip Martin



Promap
LANDMARK INFORMATION

© Crown Copyright and database rights 2024. OS AC0000813445
Plotted Scale - 1:1250. Paper Size - A4

offering two character fireplaces both with granite lintels.

Trelean Farmhouse is a gorgeous home which will appeal to many.

In greater detail the accommodation comprises (all measurements are approximate):

ENTRANCE HALL

With oak flooring, one ceiling mounted light and a wall mounted radiator. Skirting installed. Doors to sitting room, kitchen/diner and stairs to the first floor.

SITTING ROOM

A light room with two sash windows facing the front aspect equipped with the original wooden shutters. A wood burner lies upon a slate hearth with wooden surround. Storage in the chimney breast recess. One wall mounted radiator, two ceiling mounted lights and skirting. Oak flooring.

KITCHEN/DINER

A dual aspect room comprising kitchen and dinning space. The kitchen comprises a range of matching base and eye level units with cupboards and drawers. A mixture of wooden and granite worksurfaces with a porcelain sink positioned in front of the sash window to the side aspect. An oil fired AGA is

situated within a large fireplace with an impressive granite lintel and tiled surrounds. A door leads to the side garden. There is spot lighting installed. The dining space is big enough for a table and eight chairs with a sash window to the side aspect with wooden shutters. There is a second feature fireplace with another granite lintel.

UTILITY

A large utility with a handful of base and eye level units with worktop. Two ceiling mounted lights and a window to the side aspect.

GROUND FLOOR SHOWER ROOM

A white bathroom suite comprising toilet, hand wash basin and shower. Tiled flooring and walls. Window to the side aspect. Wall mounted radiator, extractor fan and a ceiling mounted light.

STAIRS & LANDING

Carpeted stairs lead to a large landing feature a large sash window. One ceiling mounted light. Giving access to four bedrooms, family bathroom and walk in wardrobe/storage cupboard.

BEDROOM ONE

With a window to the side aspect, skirting, coving, loft access and a wall

Philip Martin

mounted radiator. One ceiling mounted light.

BEDROOM TWO

With a window to the side aspect, skirting & coving, wall mounted radiator, and a ceiling mounted light.

BEDROOM THREE

With a window to the front aspect, skirting and coving. A wall mounted radiator and ceiling mounted light.

BEDROOM FOUR

With a window to the side aspect, ceiling mounted light and wall mounted radiator. Skirting and coving.

BATHROOM

An exceptionally large and contemporary bathroom comprising a free standing bath, hand wash basin, shower and toilet. A window to the side aspect. A mixture of tiled and painted walls and a wall mounted radiator.

THE GROUNDS

The grounds are nicely separated into three areas totalling 3/4 of an acre. A well maintained front and side garden comprising a mixture of lawn and patio featuring many established bushes and plants. A parking area to accommodate multiple cars is currently laid to lawn but could be changed to a hardstanding if required. The third area is the main gardens which is a real haven for wildlife featuring many mature trees, plants and bushes. The grounds are perfect for entertaining during the summer months and ideal for a green-fingered individual.



SERVICES

Oiled fired central heating, private shared water supply and mains electric. Private drainage.

DATA PROTECTION

We treat all data confidentially and with the utmost

care and respect. If you do not wish your personal details to be used by us for any specific purpose, then you can unsubscribe or change your communication preferences and contact methods at any time by informing us either by email or in writing at our offices in Truro or St Mawes.

Philip Martin



COUNCIL TAX & TENURE

Council Tax - C

Tenure - Freehold.

VIEWING

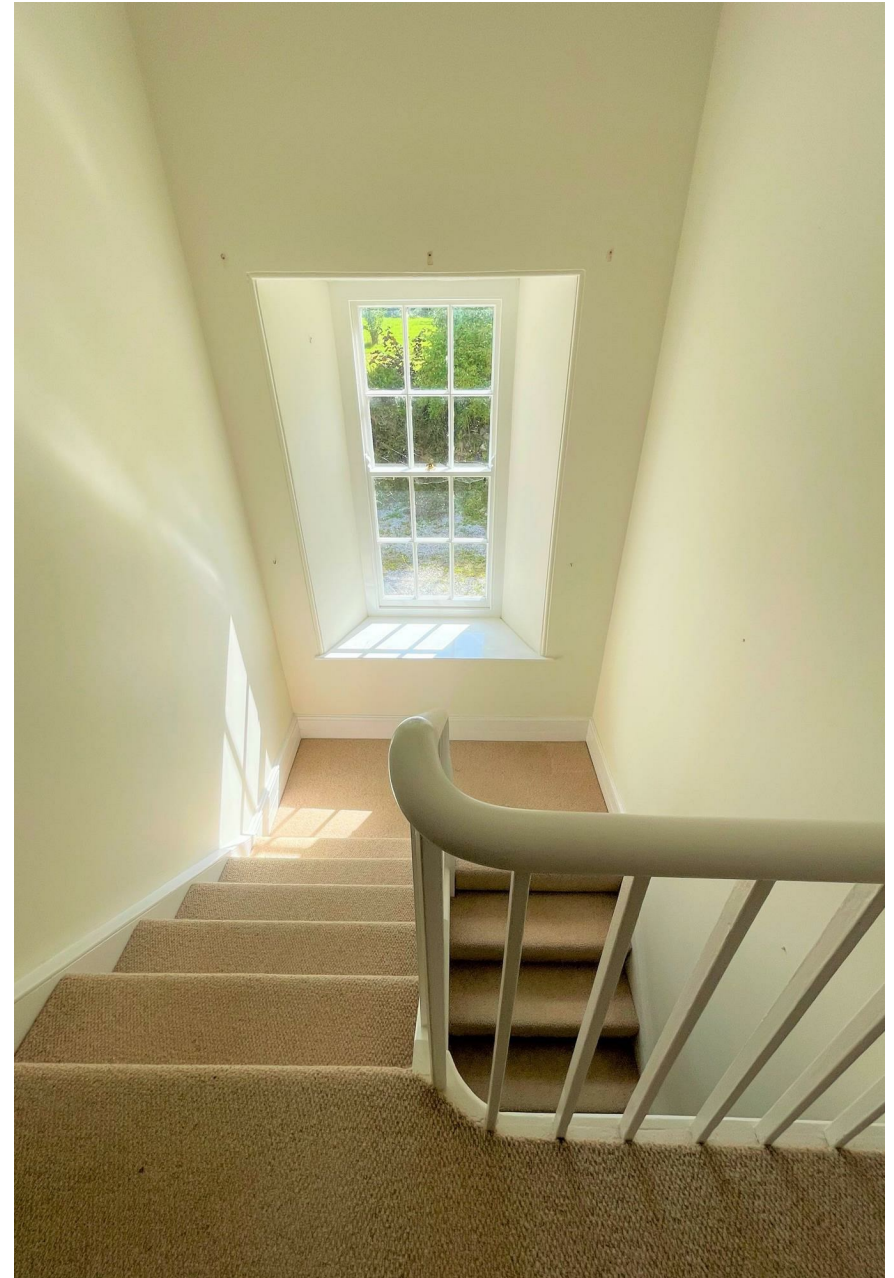
Strictly by Appointment through the Agents Philip Martin, 9 Cathedral Lane, Truro, TR1 2QS. Telephone: 01872 242244 or 3 Quayside Arcade, St. Mawes, Truro TR2 5DT. Telephone 01326 270008.

N.B

The electrical circuit, appliances and heating system have not been tested by the agents.

DIRECTIONS

Heading west-bound down the A30, take the 4th exit towards Hayle town Centre. As you reach the Lidl mini roundabout, take the 1st exit onto Guildford Road. Continue on this road for approximately 2.5 miles until you reach a T-junction onto the B3302. Turn right and continue towards the Smugglers Inn. Just before the Smuggles Inn take a sharp right . A private tarmac lane will be seen on you left hand side signposted Trelean Barns. Continue down this drive where the hamlet of barn conversions and Trelean Farmhouse will appear.



Philip Martin



Approx Gross Internal Area
181 sq m / 1945 sq ft



Ground Floor
Approx 101 sq m / 1087 sq ft



First Floor
Approx 80 sq m / 858 sq ft

This floorplan is only for illustrative purposes and is not to scale. Measurements of rooms, doors, windows, and any items are approximate and no responsibility is taken for any error, omission or mis-statement. Icons of items such as bathroom suites are representations only and may not look like the real items. Made with Made Snappy 360.





PHILIP MARTIN

Truro 01872 242244 St Mawes 01326 270008 www.philip-martin.co.uk

Philip Martin

ESTATE AGENTS, CHARTERED SURVEYORS, VALUERS & AUCTIONEERS